

HYBRID BOND ONE

1 Bottle
1 Step
Bonding Agent

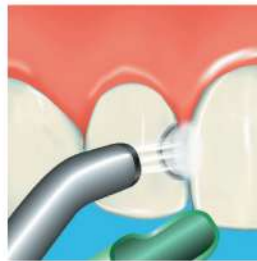


Steps



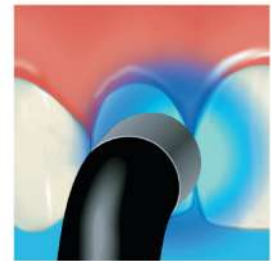
Apply 20 sec

Please keep the surface wet for 20 sec for better bond strength.



Air Blow 5-10 sec

Air blow the surface, using vacuum to prevent Hybrid Bond ONE from scattering.

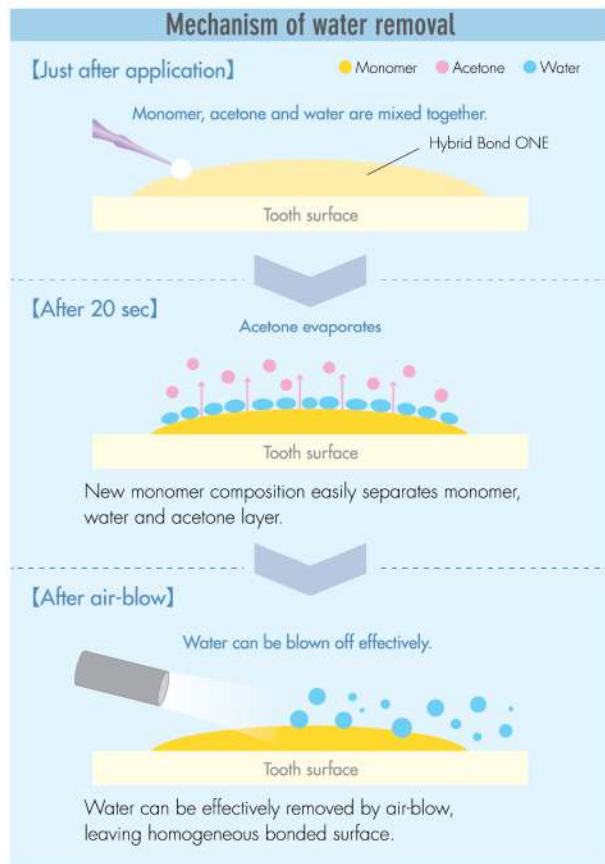


Light-cure 5 sec

Irradiate light for polymerization

Remove water effectively

Water is effectively transported by acetone evaporation.



Separation into layers as acetone evaporates



a: Hybrid Bond ONE consists of resin monomer, both acetone and water as solvents. All components are uniformly mixed to form yellow clear liquid.

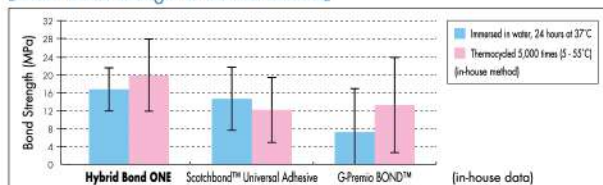
b: As acetone evaporates, water and hydrophobic resin monomer separate into two layers.



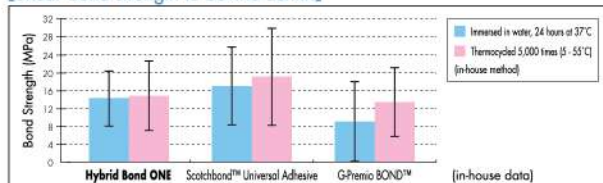
Durable bonding performance

Hybrid Bond ONE has same bonding performance with both enamel and dentin.

[Shear bond strength to bovine enamel]

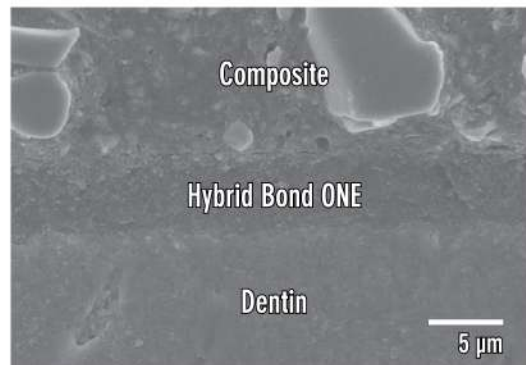


[Shear bond strength to bovine dentin]



Thin adhesive layer: Only 5 µm

Suitable for cases require high aesthetics.



Only 5 µm of thin layer has excellent aesthetics.